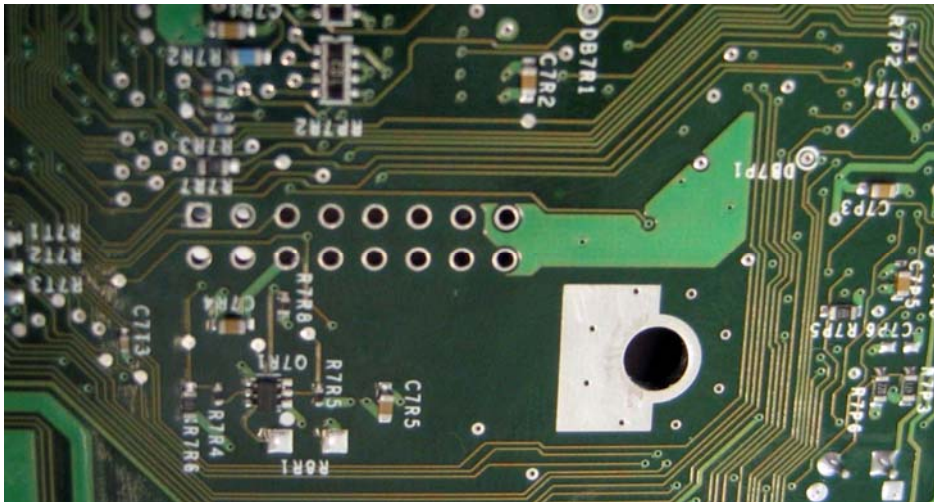
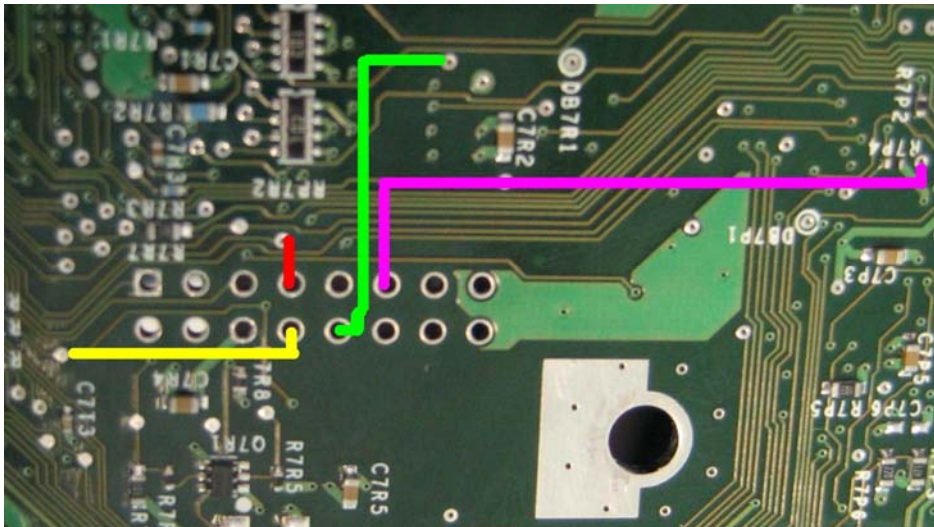



- 3) Connect the following 4 wires on the bottom of your Xbox as shown:

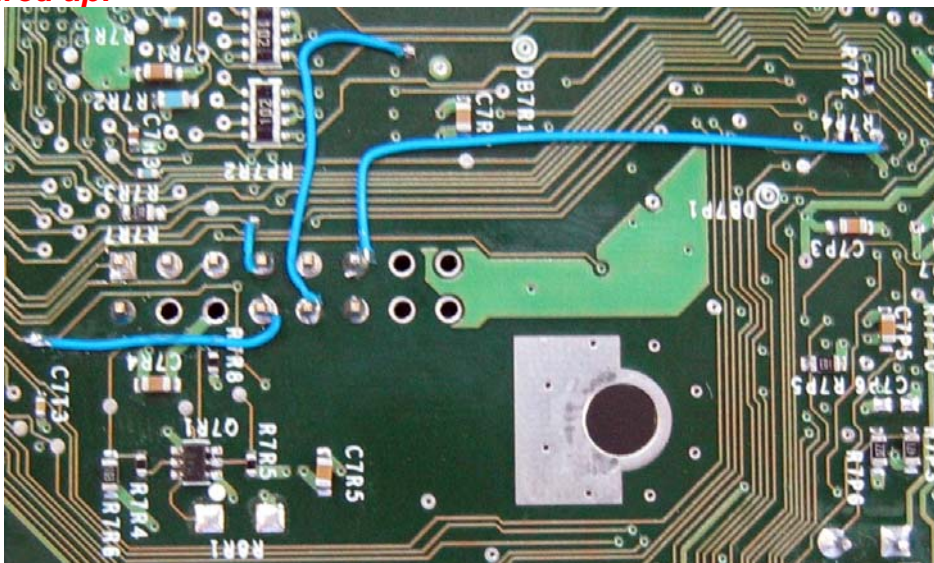
Before:



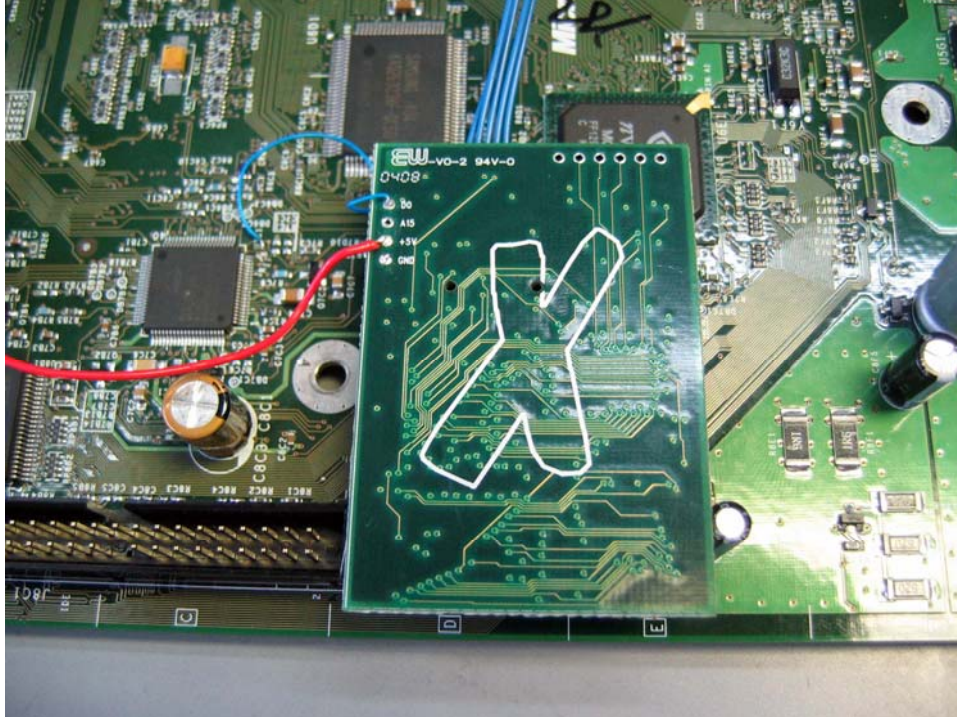
Spots to connect:



All wired up:

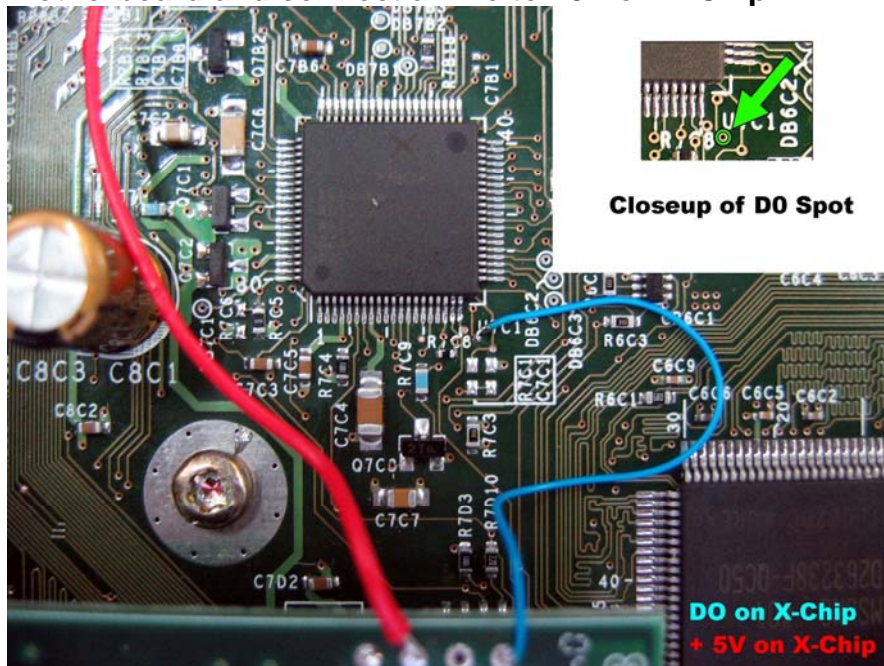


- 4) Now you can reinstall your motherboard back into your Xbox casing.
- 5) Connect the X-Chip to the pin header as shown:



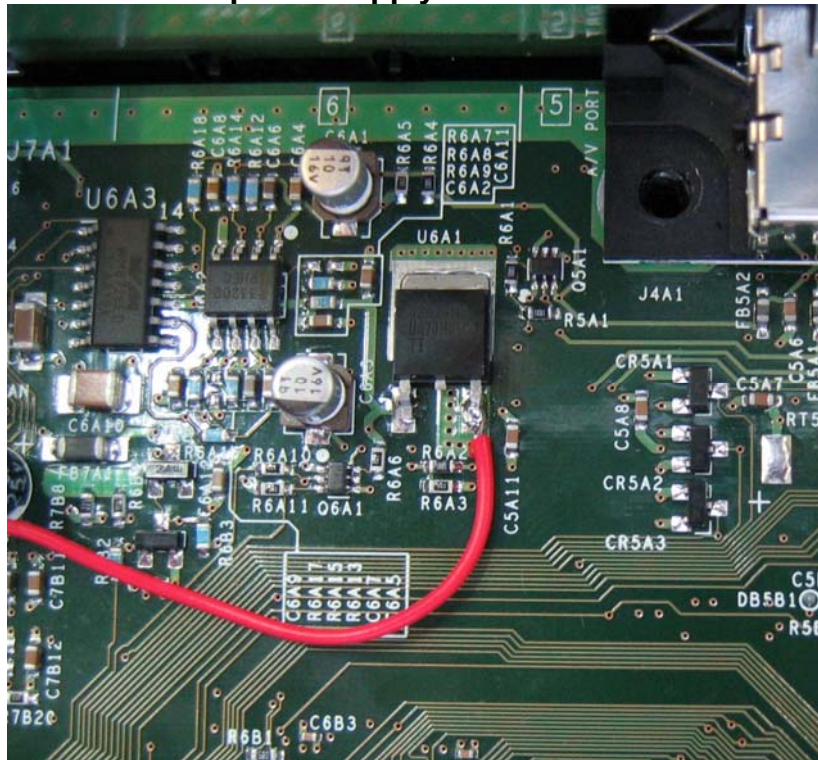
Notice how the X-Chip fits between the IDE cable connector and capacitor.

- 6) Connect a wire to D0 on the X-Chip as shown, and to the motherboard and connect a wire to +5V on X-Chip:

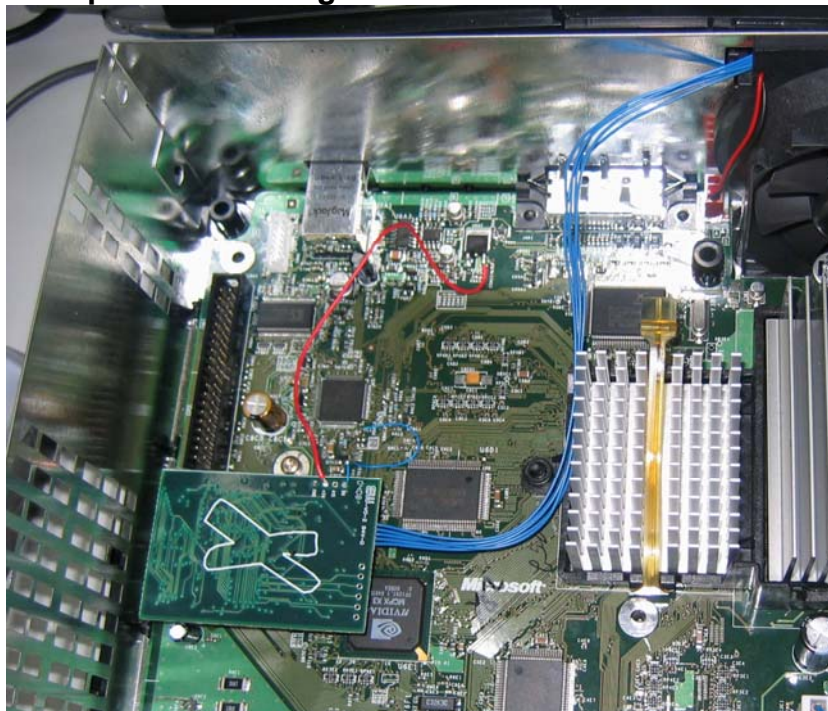


Note: D0 wire should not exceed 4 inches in length!

- 7) Connect the other end of the +5V connection on X-Chip to 5V power supply as shown:



- 8) Now route your X-Chip programmer out of the case, as shown we have passed it through the Fan holes on back of Xbox.



- 9) Now we can re-assemble the X-Box and power up enabling the X-Chip by using the power button. To disable the X-Chip power up using the Eject button

Neither Easybuy2000 nor the developers of the X-Chip can be held responsible for misinformation or damage you may cause to yourself or your Xbox while attempting an installation.